

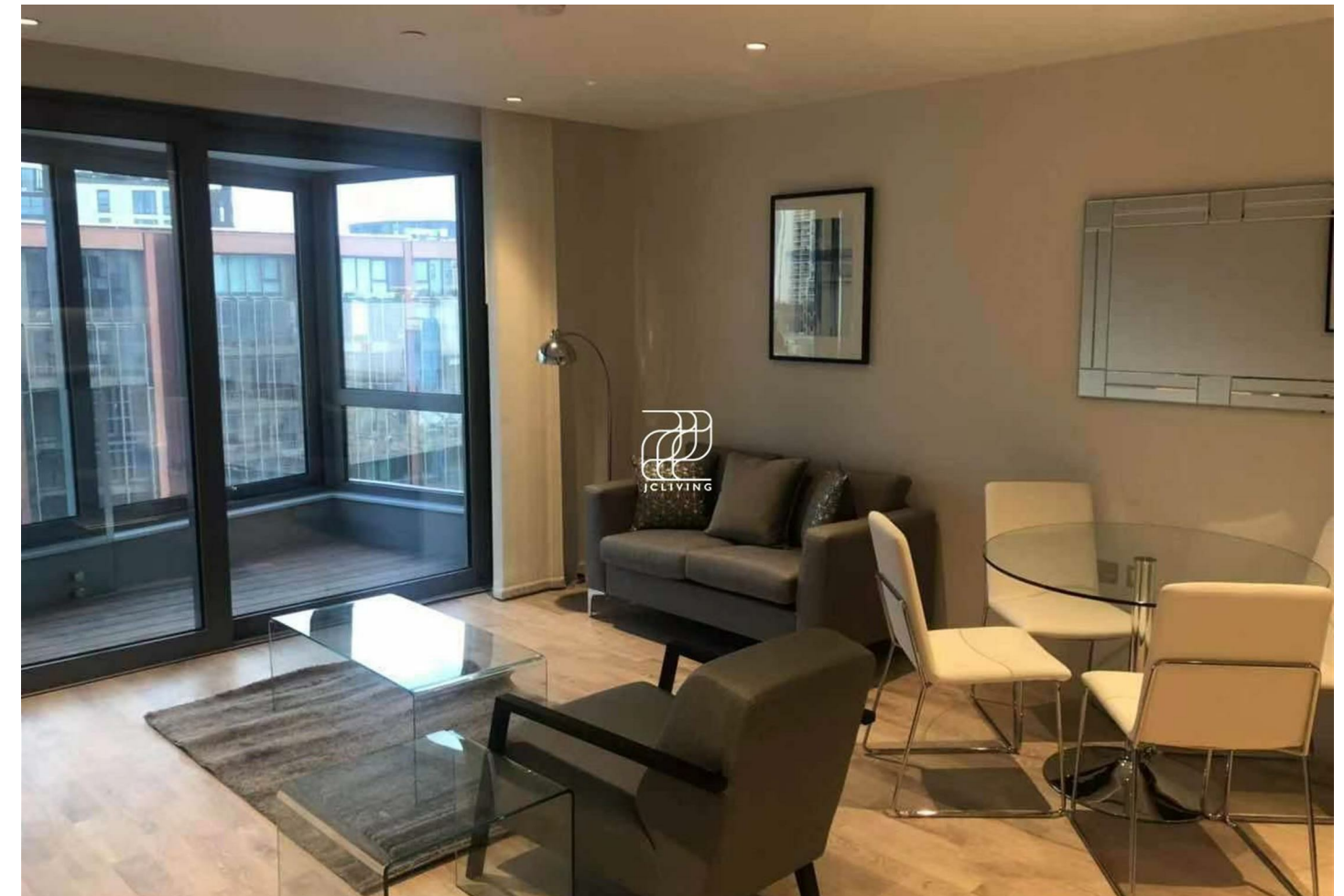
### Directions

### Viewings

Viewings by arrangement only. Call 02033696888 to make an appointment.

### EPC Rating

Energy Efficiency Rating		
	Current	Potential
Very energy efficient - lower running costs		
(92 plus) <b>A</b>		
(81-91) <b>B</b>		
(69-80) <b>C</b>		
(55-68) <b>D</b>		
(39-54) <b>E</b>		
(21-38) <b>F</b>		
(1-20) <b>G</b>		
Not energy efficient - higher running costs		
<b>England &amp; Wales</b>	EU Directive 2002/91/EC	



CN567 Apartment 65, Onyx Building 100 Camley Street, London, N1C 4PF

£770 Per Week

- Private winter garden
- Residents terrace
- Walking distance from Coals Drop Yard
- Council tax band E
- 24 hour concierge
- Fantastic transport links
- Close to Camden Town

# Onyx Building 100 Camley Street, London N1C 4PF

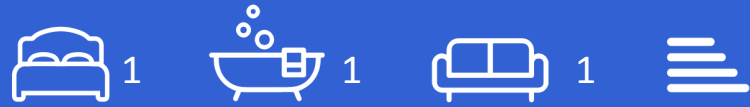
\*\*\* Please quote reference JC2306159 when contacting the agency \*\*\*

Welcome to this exquisite apartment located in Kings Cross, a true gem in the heart of London. This modern residence offers a perfect blend of comfort and convenience, making it an ideal choice for those seeking a vibrant urban lifestyle.

As you enter the apartment, you will be greeted by a spacious and well-designed living area that flows seamlessly into a private winter balcony, providing a tranquil space to relax and enjoy the outdoors all year round. The property boasts a 24-hour concierge service, ensuring that your needs are met at any time of day or night, adding an extra layer of security and convenience to your living experience.

One of the standout features of this apartment is the residents' terrace, where you can unwind and take in the stunning views of the surrounding area. This communal space is perfect for socialising with neighbours or simply enjoying a quiet moment in the fresh air.

The location is truly exceptional, with fantastic transport links just a short walk away at Kings Cross St Pancras station. This makes commuting or exploring the city incredibly easy. Additionally, you will find yourself in



Council Tax Band: E

